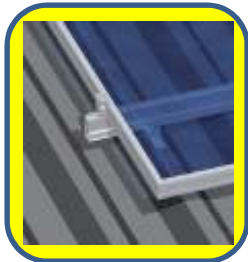




## System for Trapezoidal Sheet and Corrugated Sheet Roofs Mounting on sheet metal using “L” brackets



Module to Roof Sheet  
between Gap – 110mm

**Application:**

Trapezoidal and corrugated sheet metal

**Fastening:**

Riveted or screwed onto raised corrugations

**Module type:**

Framed and frameless modules

**Module orientation:**

Landscape / portrait

**Layers of rails:**

Single / double layer, cross rail installation

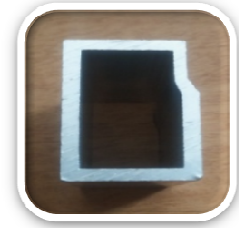
**Advantages:**

- Low fitting costs
- Every size of module array possible
- Height adjustable via elongated hole in the sheet metal bracket

MOUNTING RAIL  
PART NUM: MR10001



SPLICE CONNECTOR  
PART NUM: SC10002



MID CLAMP  
PART NUM: MC10003



END CLAMP  
PART NUM: EC10004



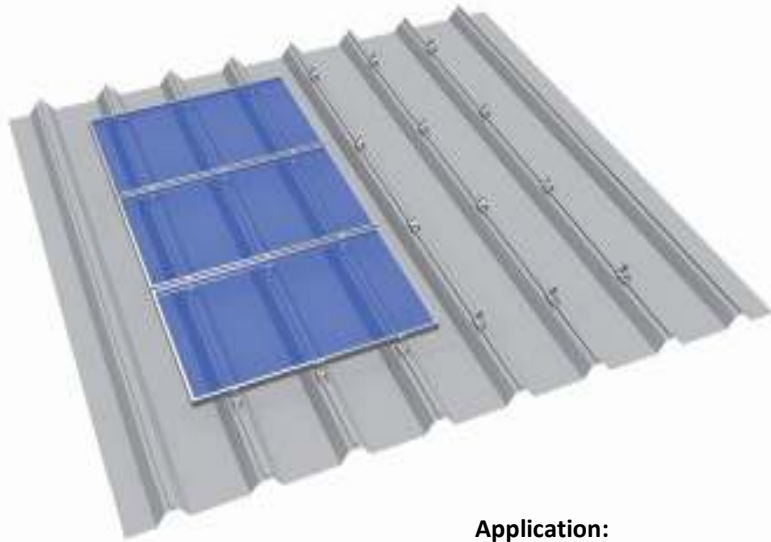
L BRACKET  
PART NUM: LB10005





# System for Standing Seam Sheet Metal Roofing

## Mounting with standing seam clamps



SEAM CLAMP  
PART NUM: SC10006



MID CLAMP  
PART NUM: MC10003



END CLAMP  
PART NUM: EC10004



**Application:**  
Seamed roofing

**Fastening:**  
Non-penetrative

**Module type:**  
Framed modules

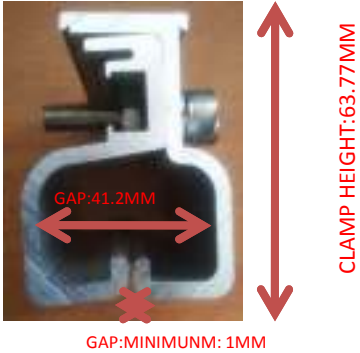
**Module orientation:**  
Horizontal/vertical (for clamping on the short side)

**Layers of rails:**  
Single layer

**Advantages:**

- No rails necessary
- Low material/logistics/installation costs
- Quick mounting
- No roof penetration

**Note:**  
The respective clearances between the raised corrugations required for optimum fastening of the modules must be adhered to





## PRODUCT DESCRIPTION



**Product description:**

**PART NUMBER:**

Material Aluminium  
max. torque of inertia  
max. resisting torque  
Dimensions  
Article supplement

**MOUNTING RAIL.**

**MR10001**

EN AW-6063 T6  
I x 5.078 cm<sup>4</sup>  
W x 2.501 cm<sup>3</sup>  
H x W 42 x 35.2 mm  
no hammer-head slot on rail  
top face



**Product description:**

**PART NUMBER:**

Material Aluminium  
max. torque of inertia  
max. resisting torque  
Dimensions  
Article supplement

**SPLICE CONNECTOR.**

**SC10002**

EN AW-6063 T6  
I x 5.594 cm<sup>4</sup>  
W x 2.910 cm<sup>3</sup>  
H x W 38.6 x 23.6 mm  
Incl. slipping protection



**Product description:**

**PART NUMBER:**

Material Aluminium  
Material screw  
Module frame height from  
Clamp distance  
Article supplement

**MID CLAMP.**

**MC10003**

EN AW-6063 T6  
Stainless steel (304)  
30 mm up to 50 mm  
19 mm between modules  
pre-assembled



## PRODUCT DESCRIPTION



**Product description:**

**PART NUMBER:**

Material Aluminium

Material screw

Module frame height from 30 mm up to 50 mm

Clamp distance

Article supplement

**END CLAMP.**

**EC10004**

EN AW-6063 T6

Stainless steel (304)

30 mm up to 50 mm

25 mm between modules

pre-assembled



**Product description:**

**PART NUMBER:**

Material Aluminium

Material screw

Article supplement

**L BRACKET.**

**LB10005**

EN AW-6063 T6

Stainless steel (304)

pre-assembled



**Product description:**

**PART NUMBER:**

Material Aluminium

Material screw

Type of roofing

Article supplement

**SEAM CLAMP.**

**SC10006**

EN AW-6063 T6

Stainless steel (304)

Sheet metal / standing seam  
and round seam

Pre-assembled,  
Direct mounting of modules  
without mounting rails possible